



FOR SALE

2657 Honolulu Ave., Montrose, CA 91020

Main level used as a city approved meeting hall with large open area, built-in bar, lounge with tables and chairs, reception/greeting area, pool table, full kitchen, private office, storage areas and 2 restrooms.

Lower level (1,800 square feet) currently used for adult daycare, with large open area, private office and 2 restrooms.

Building—5,208 sq. ft. / Land—15,241 sq. ft.

Current partial income sources:

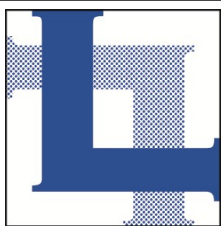
Parking lot 7:00 am to 10:00 pm
(except when property owner needs for an event).

Dance fitness—4 hours per week.

Lower level—adult daycare.

\$2,150,000

Exclusively represented by PAUL P. LOCKER, CCIM, SIOR, PMC



**LOCKER
REALTY CORP.**

818.956.8800
www.LockerRealtyCorp.com



SIOR

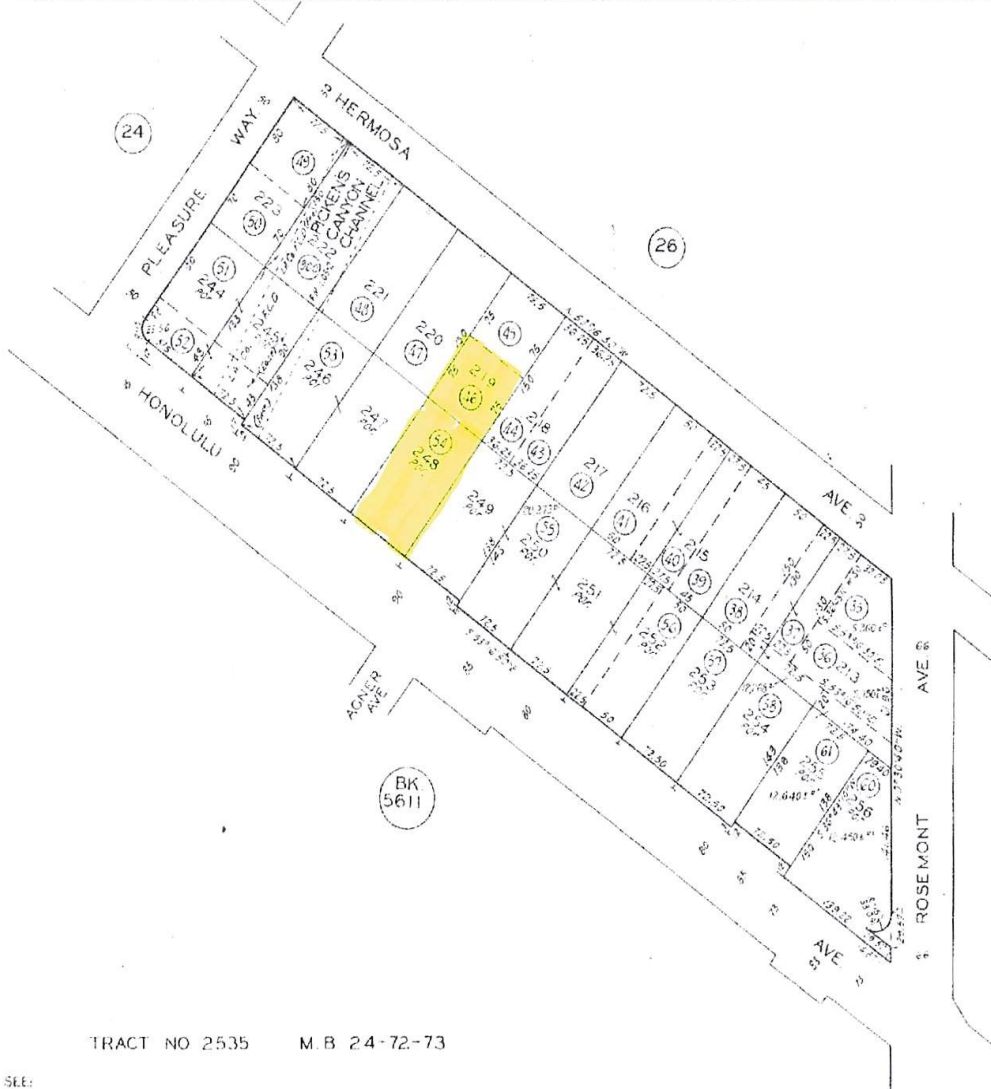


PROVIDING SERVICE WITH EXPERTISE

601 E. GLENOAKS BLVD., SUITE 200, GLENDALE, CA 91207-1736

SCALE 1" = 100'

1988



CODE 4045

TRACT NO 2535 M B 24-72-73

FOR PREV ASSMT SEE: 550-34

ASSESSOR'S MAP COUNTY OF LOS ANGELES CALIF.











